

MONOBLOCK DIRECTIONAL CONTROL VALVES

KVM10 SERIES

GENERAL FEATURES

Standard Material Specifications

- High strength cast iron
- Hard chrome plated interchangeable spools
- Steel spring caps
- Aluminium lever caps
- NBR seals

Standard Features

- Parallel circuit
- Adjustable main relief valve
- Load hold check valve
- Double action

Optional Features

- Series circuit
- Variety of spool types
- Closed center
- Carry-over option
- Single action

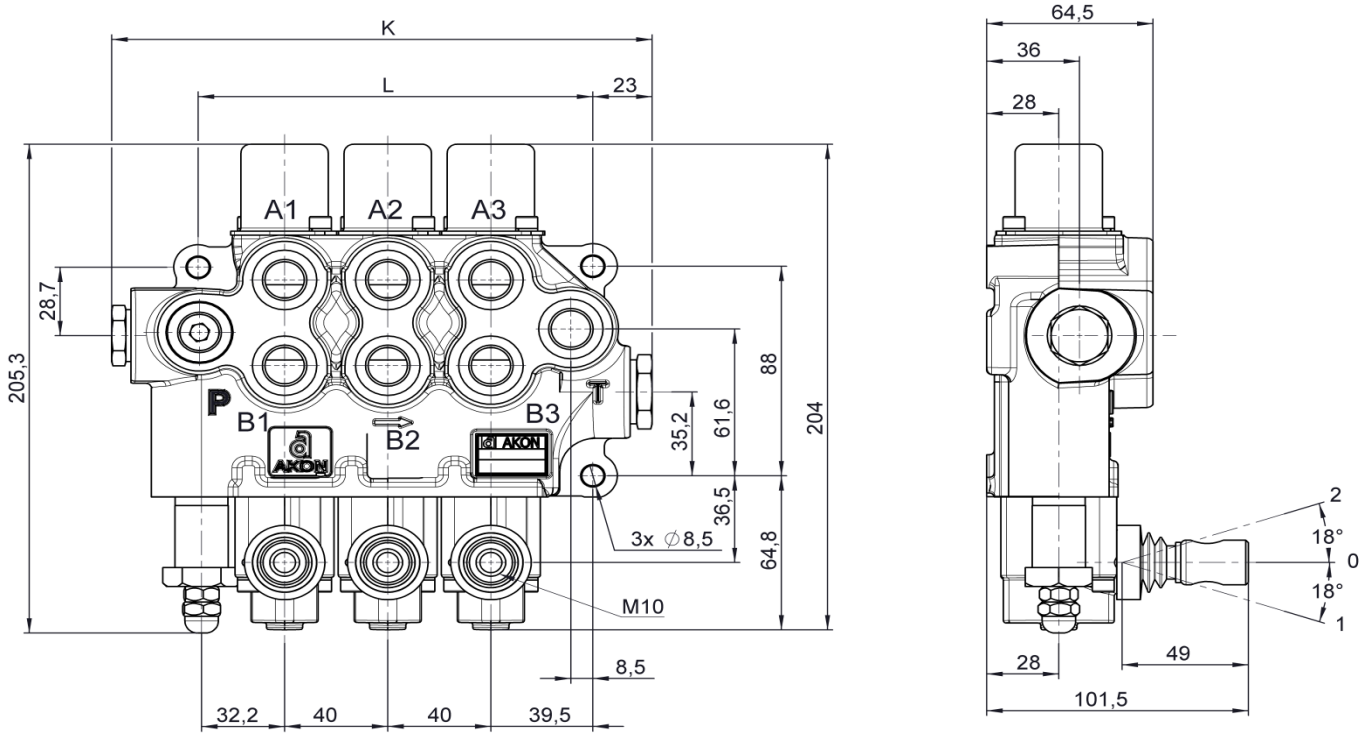
TECHNICAL SPECIFICATIONS

Number of spools	1-7
Nominal flow	45lt/min
Max. Operating pressure	350 Bar
Max. Back pressure	30 Bar
Internal leakage (at 100 Bar; 32 cSt, 40°C)	4 to 9 cc/min

WORKING CONDITIONS

Recommended oil viscosity range	10 cSt to 75 cSt
Recommended oil filtering	$\beta_{10} \geq 75$
Recommended fluid temperature range	-20 to +80
Environmental temperature range	-35 to +60
Max. Contamination level	Class 9 (NAS 1638) 19/16 (ISO 4406)

DIMENSIONAL DATA



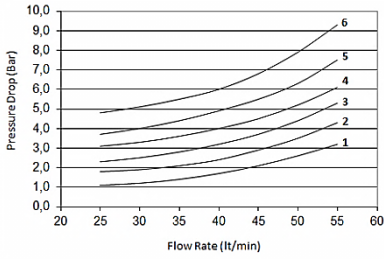
Type	L (mm)	K (mm)	W (kg)
KV M 10/1	73	129,5	3.60
KV M 10/2	113	169,5	5.50
KV M 10/3	153	209,5	7.40
KV M 10/4	193	249,5	9.45
KV M 10/5	233	289,5	11.25
KV M 10/6	273	329,5	13.20

STANDARD THREADS

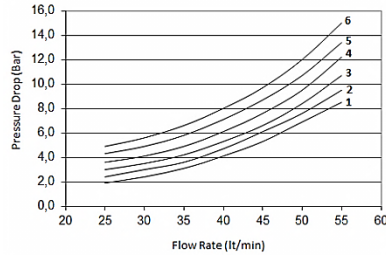
CODE	P	A/B	T	T1
A	G 3/8	G3/8	G3/8	G1/2
B	G1/2	G1/2	G1/2	G1/2

PERFORMANCE DATA PRESSURE DROP

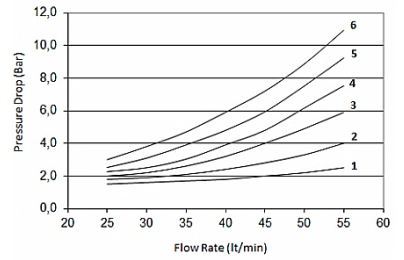
P - T



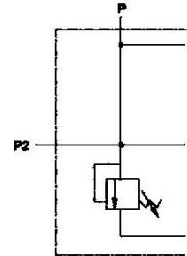
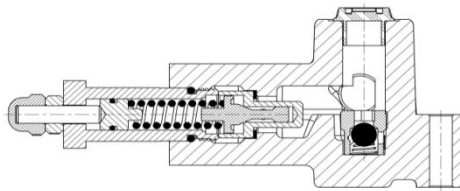
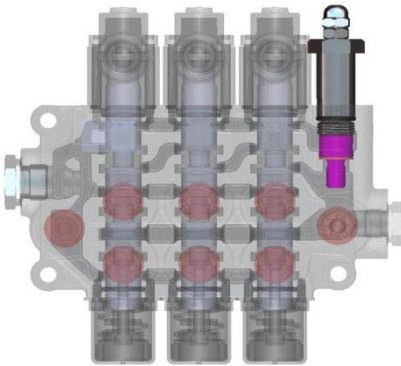
P - A/B



A/B - T

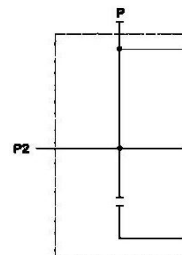
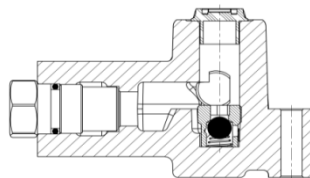
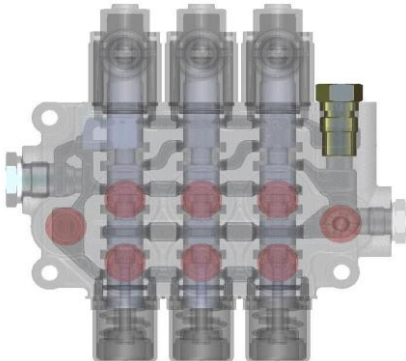


MAIN RELIEF VALVE



CODE : R

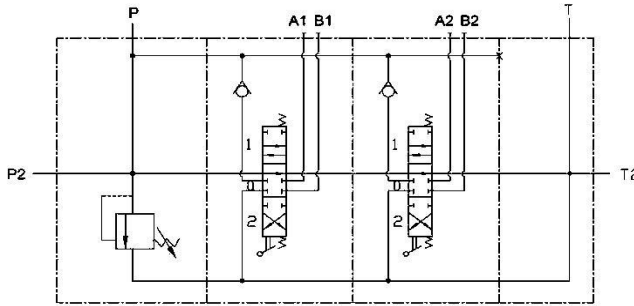
NO MAIN RELIEF VALVE



CODE : Y

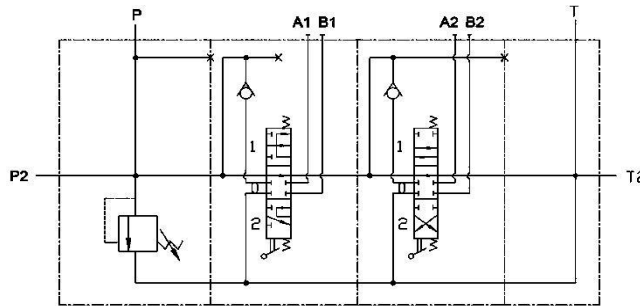
HYDRAULIC CIRCUITS

STANDARD CIRCUIT



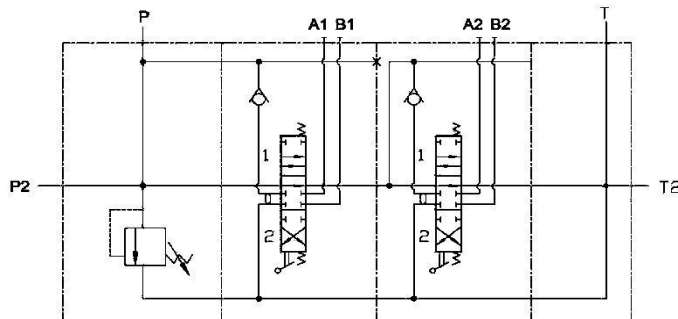
NO CODE

SERIES CIRCUIT



CODE : S

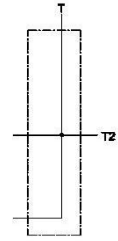
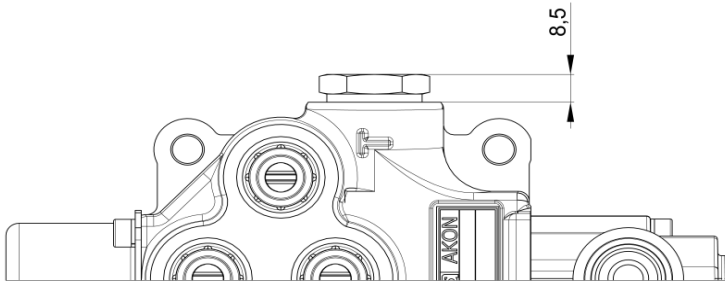
TANDEM CIRCUIT



CODE : T

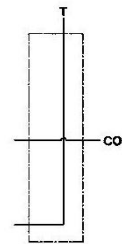
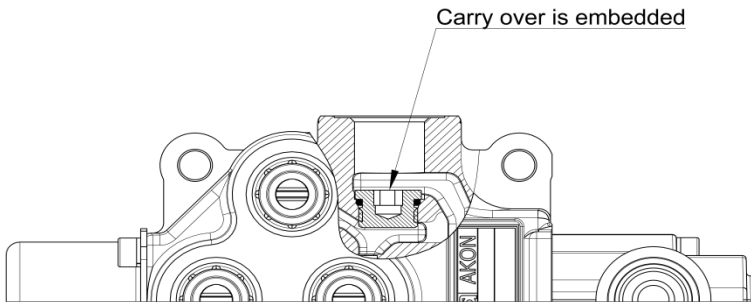
OUTLET OPTIONS

STANDARD



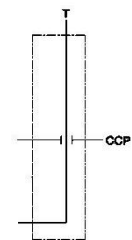
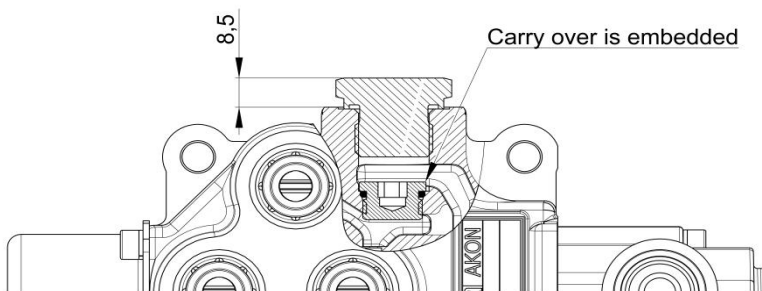
NO CODE

CARRY-OVER PLUG



CODE : H

CLOSED CENTER PLUG



CODE : K